

Naval architecture & Marine hydrodynamics research group

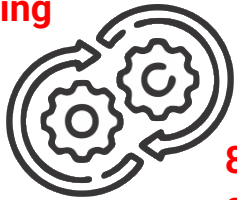


Mihkel Kõrgesaar
Associate Prof.

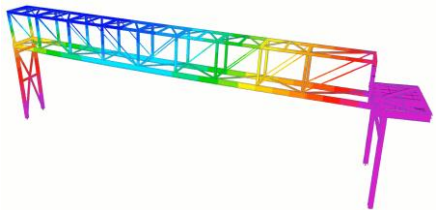


Muhammed Adil YATKIN
PhD Student

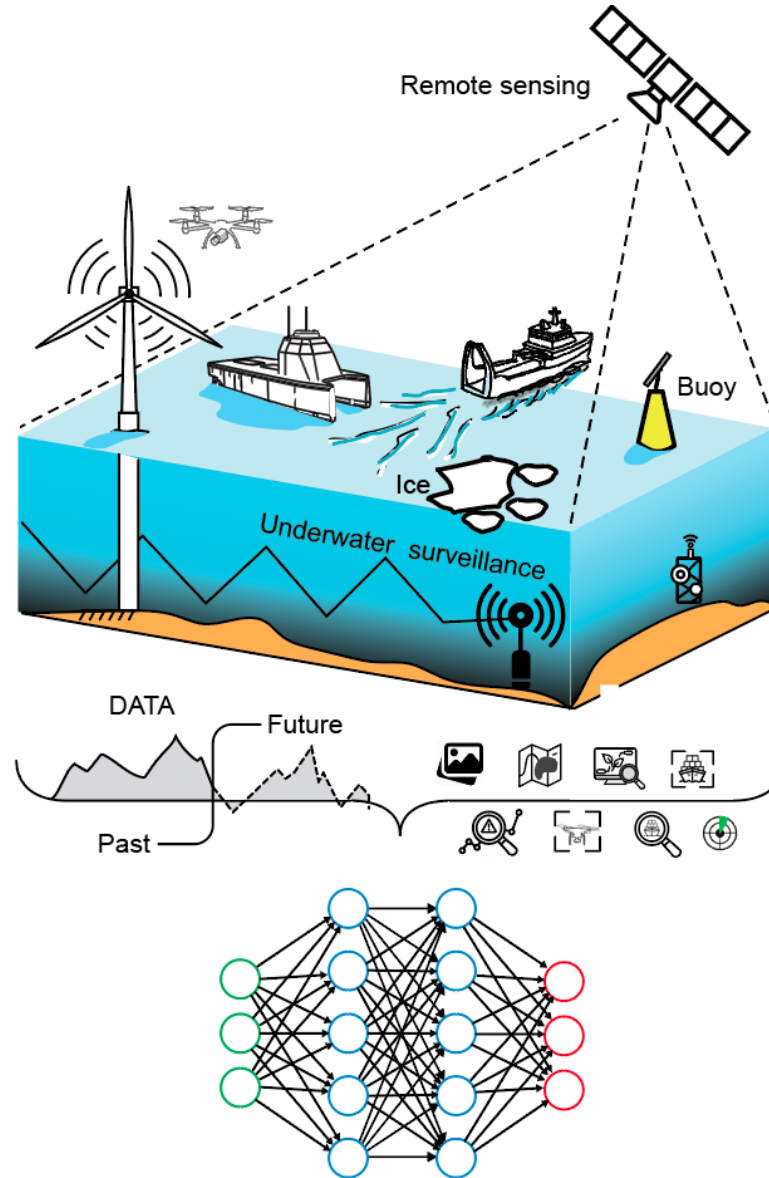
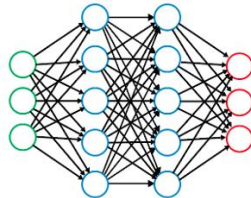
**17+ years academic
experience in
marine engineering**



**8+ years industry
experience
developing ML
based products**



**Traditional computer simulations
powered by ML methods**



Euler Analytics OU

An AI service company specializing in enhancing business AI solutions through scalable development, quality improvement, data-driven prototyping, and tailored consultancy.

