

# Sea ice detection and characterisation for safer maritime transport

Team:



Dhanushka Liyanage,  
Ph D

## Status

- Hardware developed
- Software in development
- Ready for field trials

## Impact

- Better fuel economy
- Less workload for crew
- Less incidents



Kristjan Tabri, D Sc  
Asst Prof.



Partners:



## What

Sea-ice detection and characterisation system to detect navigable ice classes

## How

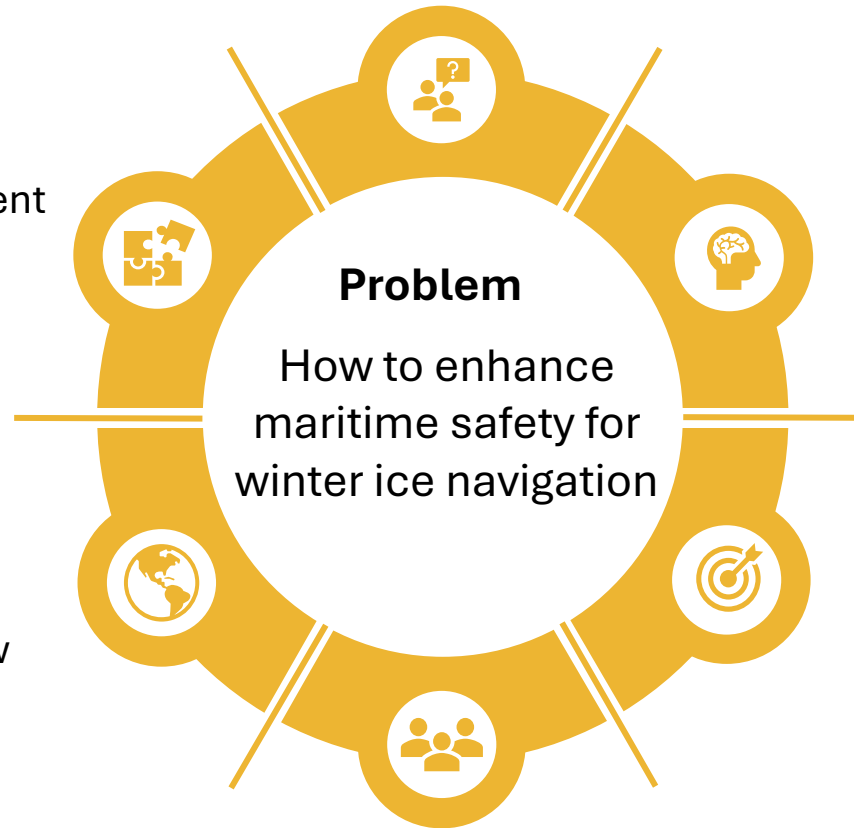
- Far-field: Space borne remote sensing
- Near-field: Vessel on-board sensing
- ML models
- **Novelty:** Combination of far and near-field

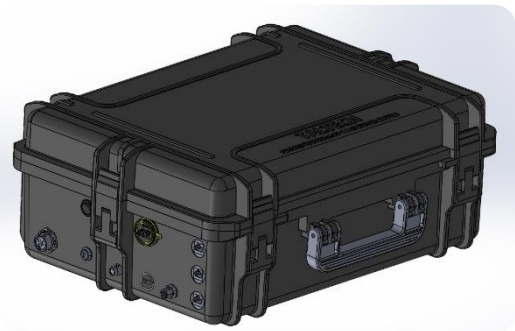
## Why

- Sat images provide bird's-eye view of the area
- On-board sensing provides a real-time ice status

## For whom

- Cargo / passenger fleet operators
- Ice breakers

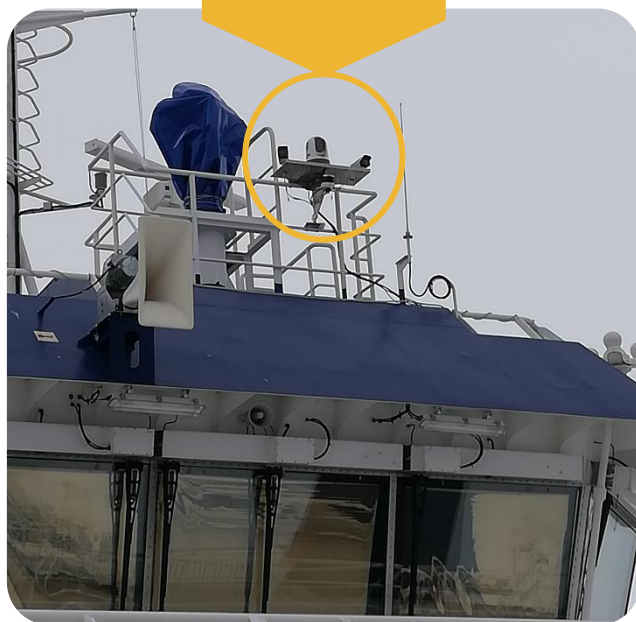




Portable  
hardware  
setup



Camera  
system on  
Töll ferry



## Sea-ice detection and classification on-board sensing in action

